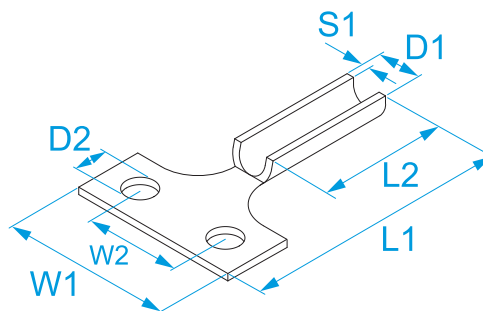


Product family: Terminals - C shunt and terminals for ground connection
Item code: 79235
Description: TERMINAL LUGS FOR COPPER CONDUCTORS FOR GROUND · UNINSULATED · RECTANGULAR

Image



Technical drawing



Specifications

TERMINAL MATERIAL: tinned copper
OPERATING TEMPERATURE: from -50 °C to +150 °C

Code	Section (mm ²)	Section (AWG)	For screw Ø screw (mm)	For screw Stud size	Indent	W1 (mm)	W2 (mm)	L1 (mm)	L2 (mm)	D1 (mm)	D2 (mm)	S1 (mm)	
79235	35	(2)	12	1/2"	14	70	40	100	47	10,8	13	3	25/25